



Natural and Safe

Complies with Health Canada and FDA cGMP

Third-party independent lab certified

Free of concerns of heavy metals, pesticides, aristolochic acid, gluten, microbes, residues or contaminants

120 Vegetarian-Capsules/Bottle

*All items except Luteal A & B are vegetarian; Fully customizable vegetarian versions are available with services from our professional lab of dispensing & compounding



Lunar Support®

Integrating oriental TCM wisdom with modern gynecology and obstetrics

In Traditional Chinese Medicine, women's fertility cycle, which allows life and its continuation possible, arises from the coordination and transformation of Yin & Yang.

Lunar Support®, is unlike Hormonal Therapy (Controlled Ovarian Hyperstimulation protocols), which uses drugs that create artificial cycles that try to match and trigger corresponding phases. Lunar Support® functions by balancing and regulating Yin & Yang, Qi & Blood, ZangFu organs, and Chong, Ren, Du, and Dai meridians.

Developed by experienced TCM masters with decades of experience treating women's health, Lunar Support® effectively regulates menstruation, promotes ovulation, protects the embryo and enhances fertility.



Bema Botanical Solutions Ltd.

T: 1.604.982.9198

E: info@bemabotanicals.com

www.bemabotanicals.com

Lunar Support®

Natural holistic solutions for women's health
(Fertility & Gynecological disorders)



1. General dosage is 4~6 caps each time, 2~3 times per day, with or after meals.
2. **Follicular A and/or B** : post-menstruation to pre-ovulation stage. (~Day 6th-12th)
3. **Ovulation Support** : pre- and during the ovulation stage. (~Day 13th-15th; Estrogen and LH rises, cervical mucus increases)
4. **Luteal A and/or B** : after ovulation to signs of menstruation. (~Day 16th - 28th; One should begin taking Luteal Support IMMEDIATELY after ovulation to maintain/support body temperature rise, which takes place 1-2 days AFTER ovulation)
5. **Menstruation support** : during menstruation to help prepare for a fresh start. (~Day 1st - 5th; Lunar Support[®] menstruation support has been specifically designed as part of the fertility treatment plan, so a gentle blood-facilitating and qi-regulating effect has been carefully incorporated; however, when used to treat dysmenorrhea and PMS, one may take from Day 21th - 5th)
6. Because everyone is unique as viewed in Chinese Medicine, please note that the “Days of Cycle” are common general references. Lunar Support[®] is best used with a personalized Basal Body Temperature chart.
7. The actual dose should be decided by health care professional based on assessment of patient’s individual condition and sensitivity to herbal ingredients.

Lunar Support[®] is based on the physiological transition and transformation during each phase, and can effectively treat gynecological disorders when prescribed individually according to Chinese medicine theory and approach; or in combination corresponding to the 6 phases to improve fertility



Follicular A

Shu Di Huang (Rehmanniae Radix Praeparata), Shan Yao (Radix Dioscoreae Oppositae), Shan Zhu Yu (Fructus Corni Officinalis), Fu Ling (Sclerotium Poriae cocos), Mu Dan Pi (Cortex Moutan Radicis), Ze Xie (Rhizoma Alismatis), Dang Gui (Radix Angelicae Sinensis), Bai Shao (Radix Peoniae Lactiflorae)



Follicular B

Dang Gui (Radix Angelicae Sinensis), Bai Shao (Radix Peoniae Lactiflorae), Chi Shao (Radix Paeoniae Rubra), Shan Yao (Radix Dioscoreae Oppositae), Shan Zhu Yu (Fructus Corni Officinalis), Shu Di Huang (Rehmanniae Radix Praeparata), Fu Ling (Sclerotium Poriae cocos), Mu Dan Pi (Cortex Moutan Radicis), Rou Cong Rong (Herba Cistanches), Tu Si Zi (Semen Cuscutae), Xu Duan (Dispacis Radix), Sha Ren (Fructus Amomi)



Ovulation

Ji Xue Teng (Mucunae Caulis), Chi Shao (Radix Paeoniae Rubra), Nu Zhen Zi (Fructus Ligustri Lucidi), Rou Cong Rong (Herba Cistanches), Tu Si Zi (Semen Cuscutae), Tao Ren (Semen Persicae), Hong Hua (Flos Carthami), Dan Shen (Radix Salviae Miltiorrhizae)



Luteal A

Shu Di Huang (Rehmanniae Radix Praeparata), Dang Gui (Radix Angelicae Sinensis), Bai Shao (Radix Peoniae Lactiflorae), Tu Si Zi (Cuscutae Semen), Du Zhong (Eucommiae Cortex), Chuan Xiong (Cnidii Rhizoma), Ba Ji Tian (Morindae Radix), Xiang Fu (Cyperis Rhizoma), Yin Yang Huo (Epimedii Herba), Lu Jiao Shuang (Cornu Degelatinum Cervi), Shan Zhu Yu (Fructus Corni Officinalis)



Luteal B

Dang Shen (Radix Codonopsis), Bai Zhu (Rhizoma Atractylodis Macrocephalae), Fu Ling (Sclerotium Poriae cocos), Shan Yao (Radix Dioscoreae Oppositae), Tu Si Zi (Semen Cuscutae), Xu Duan (Dispacis Radix), Du Zhong (Eucommiae Cortex), Chai Hu (Bupleuri Radix), Xiang Fu (Cyperis Rhizoma), Bai Shao (Radix Peoniae Lactiflorae), Lu Jiao Jiao (Colla Cornus Cervi)



Menstruation

Xiang Fu (Cyperis Rhizoma), Chi Shao (Radix Paeoniae Rubra), Yi Mu Cao (Leonuri Herba), Xu Duan (Dispacis Radix), Yuan Hu (Corydalis Rhizoma), Mu Dan Pi (Cortex Moutan Radicis), Chuan Xiong (Cnidii Rhizoma), Dang Gui (Radix Angelicae Sinensis), Gou Teng (Uncariae Ramulus cum Uncus), Nu Zhen Zi (Fructus Ligustri Lucidi), Dan Shen (Radix Salviae Miltiorrhizae)



MenoPeace

Mu Dan Pi (Cortex Moutan Radicis), Nu Zhen Zi (Ligustri Fructus), Bai Shao (Radix Peoniae Lactiflorae), Dang Gui (Radix Angelicae Sinensis), Chai Hu (Bupleuri Radix), Mai Men Dong (Ophiopogonis Tuber), Fu Shen (Poria Radix cum Pini), He Huan Hua (Albiziae Flos), Zhi Zi (Gardenia Fructus), Suan Zao Ren (Zizyphi Spinosae Semen), Zhen Zhu Mu (Concha Margaritifera Usla)



PCOS

Xiang Fu (Cyperis Rhizoma), Cang Zhu (Rhizoma Atractylodis), Ban Xia (Pinellia Rhizome), Yin Yang Huo (Epimedii Herba), Ze Xie (Rhizoma Alismatis), Du Zhong (Eucommiae Cortex), Tu Si Zi (Semen Cuscutae), Chi Shao (Radix Paeoniae Rubra), Shan Zha (Fructus Crataegi), Ze Lan (Herba Lycopi), Huang Jing (Rhizoma Polygonati)





*the holistic TCM solution
for Menstrual care & Fertility Support*

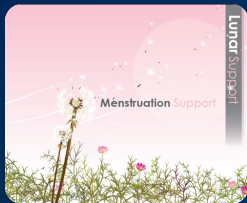
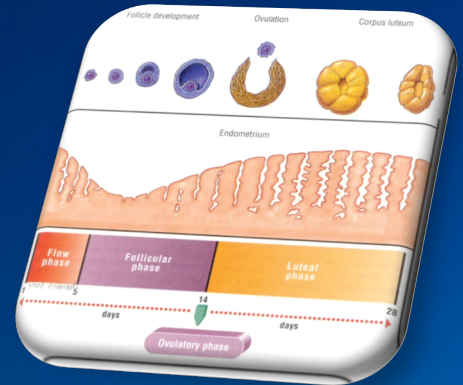


**Inspired by Nature
Proven by Science**

Lunar Support™

The "Lunar Support" line is a series of 9 TCM formulas for your clinical consideration in treating infertility & menstrual disorders. While we actively encourage and assist you to customize your own personal prescriptions using our specialized dispensing and compounding service, Bema has prepared the Lunar Support line for your ease and convenience of use in your busy clinic.

All formulas in this series are experientially developed and used by prominent TCM gynecologists with evident clinical results. *Because our care is non-stop for you, we have also a special formula developed for Menopausal and related syndromes.



period phase
(day 1 – day 5)



follicular phase A
(day 6 – day 11)



follicular phase B
(day 6 – day 11)



ovulation phase
(day 11 – day 15)



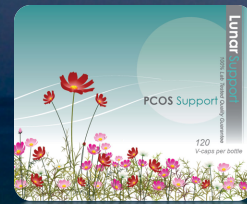
luteal phase A
(day 16 – day 28)



luteal phase B
(day 16 – day 28)



for supporting
Ovarian Reserve



for PCOS



for menopausal
syndrome

Bema believes in the powerful synergy of Traditional Chinese Medicine and modern science. Our empirical approach ensures that the raw herbs, extracts and prescriptions from our full-spectrum dispensary are of the finest quality, purity and safety.

Bema Botanical Solutions Ltd.

Inquiry T: +1 604 982 9198 F: +1 604 982 9199 E: info@bemabotanicals.com